

**Daily Lab Work Plan: Measles and Rubella EIAs (Total samples to be tested = 700)**

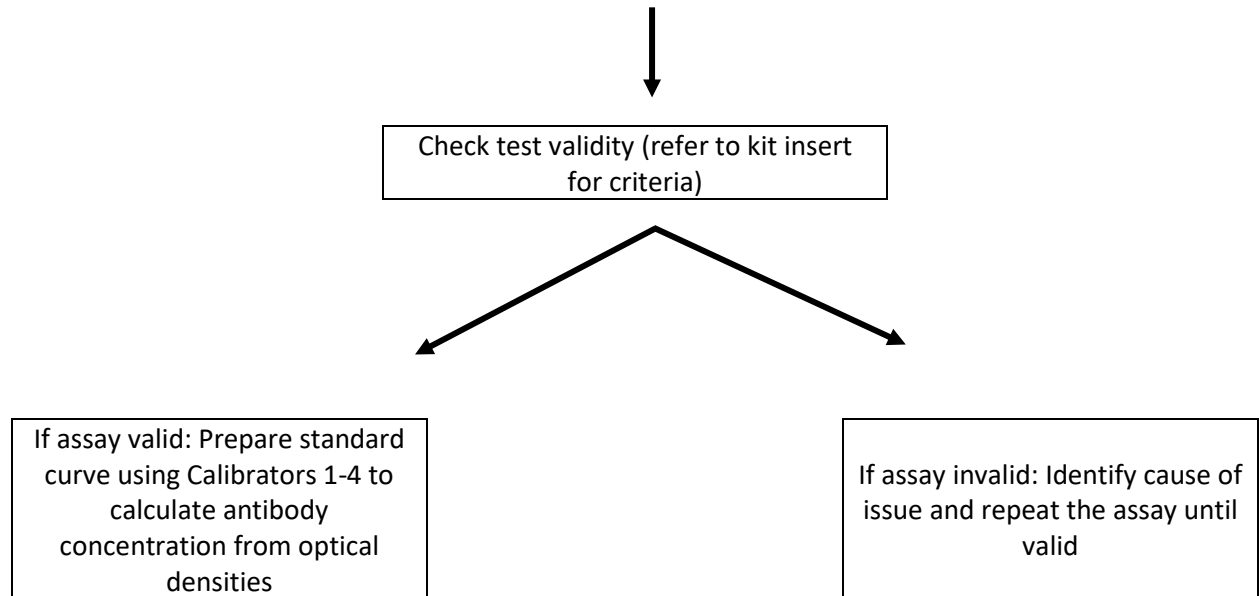
Remove one freezer box from the freezer and thaw samples (N=88 samples)

Staff 1: Run measles IgG EIA

Staff 2: Run rubella IgG EIA

Cal 1	....										
Cal 2											
Cal 3											
Cal 4											
PC											
NC											S87
S1											S88
S2											IC Pos
S3											IC Neg

Cal, calibrator; PC, positive control; NC, negative control; IC, internal control; S, sample



Repeat above steps on Days 2 through 8 (see below table), with two technicians running samples each day (1 running measles and 1 running rubella)\*

Day	Day 1	Day 2	Day 3	Day 4	Day 5	Day 6	Day 7	Day 8
Samples	1-88	89-176	177-264	265-352	353-440	441-528	529-616	617-700

\*Note: Repeat testing (e.g., equivocal samples, samples above the upper limit of detection, intra- and inter-assay random retests) may add another 1-2 days of testing. Refer to the “Example protocol for assay retesting” and the “Quality Assurance Considerations” section of the module for more information.